



EXHIBITION PROCESSES ON CAMPUS

EMILY CARR UNIVERSITY OF ART + DESIGN

I N D E X

Exhibition Spaces | pg 2-3

Installation Procedures | pg 4-6

Contacts | pg 6-9

Facilities, Libby Leshgold, Student Galleries, Technicians, Tool Centre + Media Resources

Map of Plywood Backed Walls | pg 10

Map of Michael O'Brian Exhibition Commons | pg 14

EXHIBITION SPACES

All exhibition spaces are overseen by the the Libby Leshgold Gallery and the Exhibitions Office. Exhibitions are selected by the Student Exhibition Committee and Students Union, except for those held in the MOEC, which are selected by the MOEC Exhibition Committee. Committees also exist for the Grad Show and the Faculty Gallery.

All exhibition inquiries should be sent to exhibitions@ecuad.ca

[Libby Leshgold Gallery](#)

A public art gallery dedicated to the presentation of contemporary art. Our program of curated exhibitions includes the work of leading practitioners as well as emerging artists, and is situated within an international context of art and design. The Gallery hosts a number of events and public programs alongside our exhibitions, including book launches, artists' talks, lectures and symposia.

[Michael O'Brian Exhibition Commons + RBC Media Gallery](#)

Provides unique opportunities for the Emily Carr community to present its work to the public. Programmed by a committee made up of members of the ECU Community, the Michael O'Brian Exhibition Commons and RBC Media Gallery are flexible pedagogical spaces that reflect Emily Carr University's diverse approach to making.

[Faculty Gallery](#)

A space dedicated to the presentation of artwork and research by Emily Carr University's regular and non-regular faculty. On the first floor near Media Resources.

[READ Books](#)

READ Books is Emily Carr University's specialized art bookstore. Located adjacent to the Libby Leshgold Gallery, READ stocks a diverse collection of artists' books, monographs, exhibition catalogues, critical theory, artists' editions, magazines and Emily Carr course textbooks. READ Books supports the ecology of artists' publishing in Vancouver, with public book launches and readings offered on a regular basis.

[Ron Burnett Library + Learning Commons](#)

The primary purpose of the Library as an exhibition venue is to provide space for students to exhibit their work. Faculty, staff and university departments can also apply to use this space and the library welcomes proposals from instructors for exhibitions of work completed in a classroom context. Proposal Guidelines and a map of spaces are currently being made to reflect the new Library at Great Northern Way. To exhibit in the Library, email library@ecuad.ca

STUDENT GALLERIES

CRCP Exhibition Hall | 3rd Floor Atrium near Animation

Open to all years, majors, mediums, collectives along with faculty and student collaboratives.

[Chelsea Yuill](#) | 4th Yr Critical + Cultural Practices, Minor in Curatorial Practices

PAINTING DEPT | 4th Floor Painting Studios

Gallery dedicated to painting and sculpture exhibitions by students.

[ALLERGY GALLERY](#)

Yasmine Haiboub, Aubin Kwon, Jack Kenna | 4th Yr Visual Arts

SCULPTURE DEPT | 1st Floor Sculpture Studio (window by mini-loafe)

Makeshift exhibition space primarily focused on exhibiting sculpture + installation works.

[TANKSPACE](#)

Dana Qaddah & Kate Giles | 4th yr Visual Arts

ECUAD GNW INSTALLATION PROCEDURES

1. **Works may only be hung on plywood-backed walls.** *For more on plywood-backed walls see pg 5-9*
2. **Classrooms + Critique Rooms** - Faculty and Instructors may hang things on the walls inside their classrooms and critique rooms without seeking permission from Facilities if the nail or screw is not longer than 30mm. For the hanging of heavier items please see [Facilities](#)
3. **Studio Spaces** - Students may hang work as long as the screw or nail used is no longer than 30mm. Students should see the appropriate technician to install heavier work. *See Contact pg 11-12*
4. **Hallways + Lightwells** - to book hallway and lightwell spaces contact [Facilities](#). Please note this does not apply to the atrium areas
5. **Atriums** - 3rd + 4th floor atria are studio and work areas for students. Students may hang 2D work only, ensuring that the nail or screw used to secure the work is no longer than 30mm. Please do not hang things off glass railings. Students should see Libby Leshgold Gallery technicians, [Kevin Romaniuk](#) and/or [Patrick Campbell](#), to install heavier work and check if the area is a Student Gallery. *See Contact pg 11-12*
6. **Michael O'Brian Exhibition Commons** - Anything on the 2nd floor must go through a proposal process. Please see the [Guidelines for Student Exhibitions](#) document for more information. Exhibition programming is organized by the student-led MOEC Student Exhibitions Committee, in partnership with the Libby Leshgold Gallery and the Emily Carr Students Union (ECSU). To ensure best practices in installation, Gallery Technicians, [Kevin Romaniuk](#) and [Patrick Campbell](#) will assist students. Students are welcome to seek support from the ECUAD Student Exhibitions Committee.

Please note that there may be some availability for short-term projects including crits and performances in the MOEC, but these are subject to the exhibition schedule. All requests of this nature should be emailed to exhibitions@ecuad.ca

7. **RBC Media Gallery**

Requests for exhibitions in the media gallery are overseen by the Libby Leshgold Gallery and should be directed to exhibitions@ecuad.ca. To ensure best practices in installation, Gallery Technicians, [Kevin Romaniuk](#) and [Patrick Campbell](#) will assist students.

8. **Student Exhibitions/Installations** - If a student wants to install an exhibition outside of a classroom/crit room, they will need to contact the Student Gallery, the Department Head or Facilities. Each area has its own procedure for programming exhibitions. *For spaces run by Facilities, please submit the Facilities Artwork Installation form, pg 9. For Student Galleries see Contacts pg 10*
9. **Outdoor Areas** - the outdoor areas are off limits. Visit Facilities if you have any questions.
10. **Patios** - Patios are not to be used as studio space. Patios are run by our partners at JCI. Faculty and students are welcome to use the patios for events or temporary projects within [limits/timeframe] are welcome, but the space must be returned to the original condition, including any mess that is made. Please do not hang things on the walls or off railings. Ensure the patios are left in the appropriate condition as stated above. *Contact Facilities*
11. **Taping Walls** - masking tape or painters tape is best, no duct tape.
12. **Restoring Walls** - Students and Faculty restoring walls in curriculum areas, studio space and atria need to work with the Department Technicians to ensure best practices are upheld and correct materials are used. Paint (either Flat or Eggshell) can be purchased through the Tool Centre | Room C1272. For hallways and lightwells please see Facilities who will work with you on the JCI preferred restoration pathway. For the Faculty Gallery and Exhibition Commons, please see [Kevin Romaniuk](#), the Libby Leshgold Gallery Technician. For Student Galleries, contact the Student Curators or Department Head. *See Contacts on pg 11-12*

CONTACTS

All general exhibitions inquiries should be sent to exhibitions@ecuad.ca

FACILITIES | Office D2351

Manages all of the University's campus spaces including access, safety and security on a day-to-day basis

[Facilities Clerk](#)

TECHNICAL SERVICES

[William Newhouse](#) | Shops Technologies Manager | Office B3152

INFORMATION TECHNOLOGY SERVICES

[James Nattall](#) | Manager, Collaborative Technologies + Media Resources, ITS

[Ron Barron](#) | IT Manager, ITS

LIBBY LESHGOLD GALLERY

[Cate Rimmer](#) | Curator + Director

[Kevin Romaniuk](#) | Exhibitions Technician

[Patrick Campbell](#) | Exhibitions Technician

[Susanna Browne](#) | Gallery Coordinator

READ BOOKS

[Lyndsay Pomerantz](#) | Bookstore Operations, READ Books

ECUAD STUDENT EXHIBITIONS

Resource for student lead curation + exhibition making in the Exhibition Commons.

Open to submissions from all majors, mediums, years and collectives.

hello@ecuadstudentexhibitions.com

CONTACTS FOR PROJECT SPACES

PHOTO DEPT | Room B4110

Space dedicated to photo exhibitions by students. Room occasionally used as a crit room.

[Annie Briard](#) | Sessional Faculty, Faculty of Visual Art + Material Practice

PRINT DEPT | 4th Floor Atrium

Space dedicated to print media exhibitions by Faculty and Students.

Calendar sign up sheet.

SCULPTURE DEPT | D1359

Space dedicated to sculpture exhibitions by Faculty and Students. Areas occasionally used as a crit rooms.

[Ruth Beer](#) | Professor, Faculty of Visual Art + Material Practice

[Emily Hermant](#) | Assistant Professor, Faculty of Visual Art + Material Practice

Calendar sign up sheet.

FILM + INTEGRATED MEDIA | ~DIFFUSER GALLERY

The New Media + Sound Arts ~Diffuser is a space used to exhibit research and projects generated by NMSA faculty, staff and students. For the 17/18 academic year, the space is being used for recruiting purposes with shows that draw attention to the NMSA major. However, we can be open to accepting proposals to exhibit in the ~Diffuser gallery that align with new media and sound. Proposals to exhibit will be reviewed by NMSA faculty and staff. For more information contact Julie Andreyev.

[Julie Andreyev](#) | Associate Professor in New Media + Sound Arts, the Faculty of Design + Dynamic Media

DEPARTMENT HEADS

**Faculty of Culture and Community | Critical and Cultural Practices Major,
Foundation Year, Social Practice and Community Engagement**

Cissie Fu

Dean, Faculty of Culture + Community

cissiefu@ecuad.ca

Foundation:

Gaye Fowler

Foundation Program Advisor

gflower@ecuad.ca

**Ian Gillespie Faculty of Design and Dynamic Media | Communication, Industrial,
Interaction Design Majors, Animation Majors, Film + Screen Arts and New Media +
Sound Arts Majors.**

Dean, Faculty of Design + Dynamic Media

dshack@ecuad.ca

Jake Kerr Faculty of Graduate Studies

Contact:

Chris Jones

On Leave until September 2018

cjones@ecuad.ca

Caitlin Eakins

Administrative Assistant, Graduate Studies

ceakins@ecuad.ca

Audain Faculty of Art | Includes Visual Arts, Photography, Illustration Majors and the Art + Text, and Curatorial Practice Minors

Contact:

Judy Davis

Dean, Audain Faculty of Art

jdavis@ecuad.ca

DEPARTMENT TECHNICIANS

David Morgan | Sculpture Woodshop Technician | Room D1353

Fall + Spring (September – April)

1:00pm - 4:30pm Monday

8:30am - 4:30pm Tuesday-Saturday

Yang Hong | Interdisciplinary Studio Technician | **Room**

****Fall + Spring (September – April)**

TOOL CENTRE + MEDIA RESOURCES

MEDIA RESOURCES | Room D1310

[Media Equipment Loans](#)

Fall + Spring (September – April)

8:00am - 7:45pm Mon - Thurs, Fri till 5:45pm

8:45am - 4:15pm Sat + Sun (Closed 12pm - 1pm)

TOOL CENTRE | Room C1272

Phil Jones | Studio Technician

8:30am to 4:30pm Tues - Thurs

Fall + Spring (September – April)

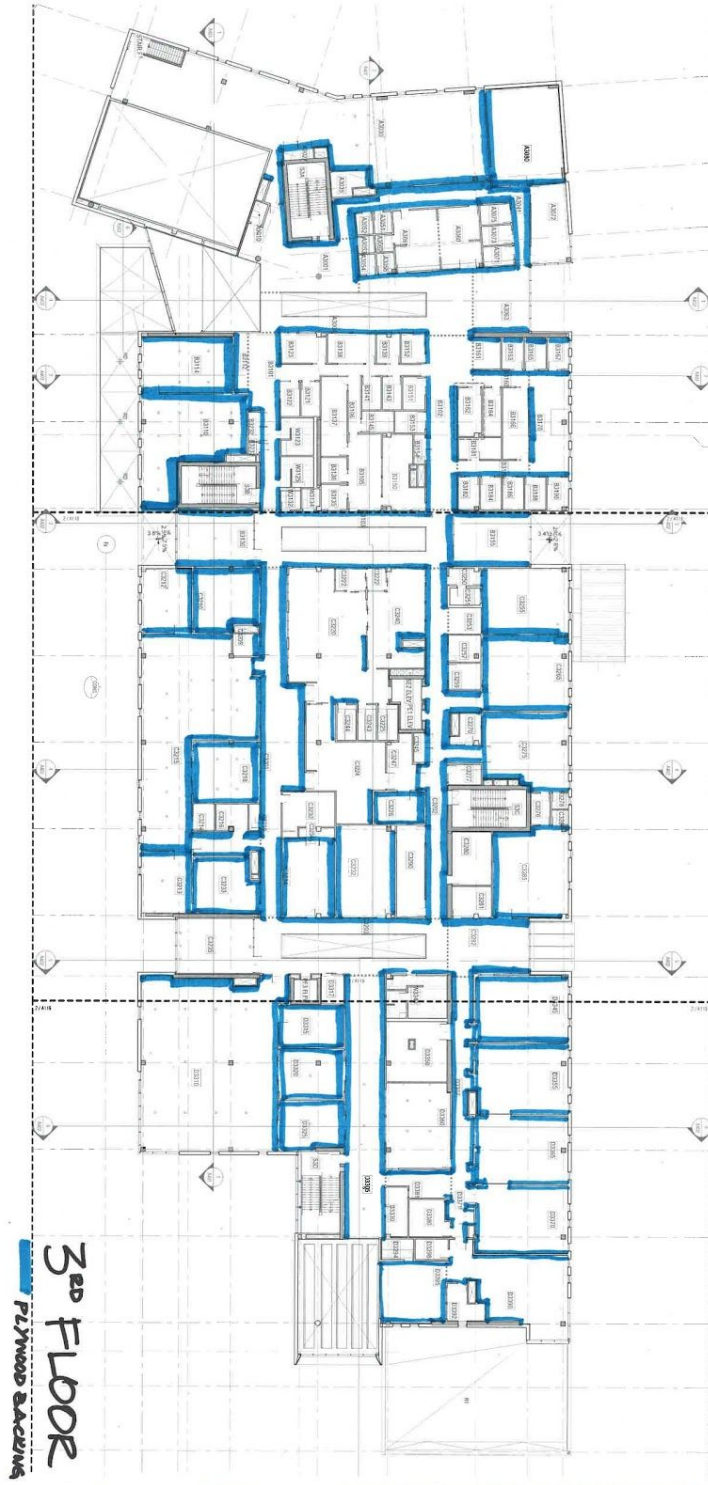
8:00am - 8:00pm Mon - Thurs, Fri, till 5pm

10:00am - 4:00pm Sat + Sun

Plywood Backed Walls







3RD FLOOR
PLYWOOD BACKING



